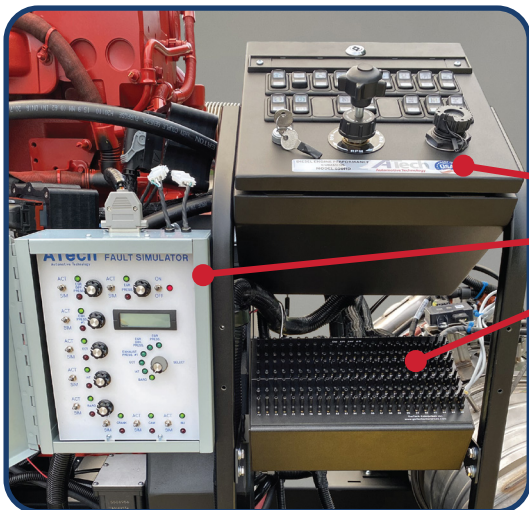
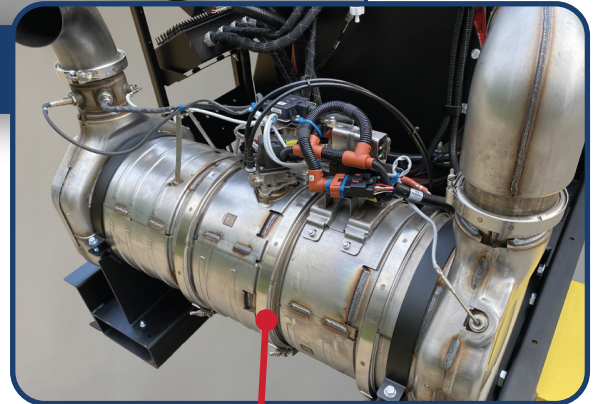




Diesel Engine Performance Trainer Model 650HD

The Diesel Engine Performance Trainer presents the live operation and study of a fully functional diesel engine. The trainer has a factory new diesel engine and components. This trainer includes Cummins' next-generation compact emission Single Module™ solution reducing size up to 70% and weight by 40%.



Features:

- Cummins' Emission Solutions: Single Module™
- Instrument Panel
- Includes A Tech Fault Simulator Enhancement
- Breakout Box to probe the wiring harness
- Exhaust after treatment (VGT, EGR, DOC, DPF, & SCR)
- Perform Test Procedures and system troubleshooting
- Hands on activities on all full functioning systems